

FREMDSPRACHENFONTS LANGUAGE FONTS CATALOGUE 9



***MacCampus® • Kempgen
An den Weihern 18
D-96135 Stegaurach
Germany***

***Tel.: +49 (0)951 – 29 67 39
email: maccampus@t-online.de
<http://www.maccampus.de>***

MacCampus Language Fonts Catalogue No. 9

© Dr. Sebastian Kempgen 1994-98

Published by MacCampus C. Kempgen March '98. All rights reserved.

MacCampus is a registered trademark.

The LaserWriter Plus or "core set" of PostScript fonts are:

Times, Helvetica, Courier, Helvetica Narrow, AvantGarde, New Century Schoolbook, Bookman, Palatino, Zapf Chancery, Zapf Dingbats.

These names (and others mentioned in this catalogue) are trademarked by their respective holders (Linotype AG, International Typeface Corporation) and duly acknowledged.

MacCampus • An den Weihern 18 • D-96135 Stegaurach • Germany

Tel. +49 – (0)951 – 29 67 39

email: maccampus@t-online.de • <http://www.maccampus.de>



Б

QuickStart

- Inhaltsverzeichnis: 04–05
- Kyrillisch 08–14
- Osteuropa 20–22
- Griechisch 36–38
- Preisliste 52–56
- Bezugsquellen 59

MC

à

QuickStart

- Contents 04–05
- Cyrillic 08–14
- Latin Eastern Europe 20–22
- Greek 36–38
- Price List 52–56
- Distributors 59

η

§

Ω

Language • Sprache	Script • Schrift • Font-Series	Sample Fonts	Page
Russisch/Russian Weißrussisch/Byelorussian Ukrainisch/Ukrainian Bulgarisch/Bulgarian Serbisch/Serbian • Makedonisch/Macedonian	Cyrillic • MosFonts	Ladoga Pro RomanCyrillic Pro GaramondCyrillic Faktor plus all ... Cyr	07
Kroatisch/Croatian Polnisch/Polish Tschechisch/Czech Slovakisch/Slovak Sorbisch/Sorabian • Slovenisch/Slovenian Litauisch/Lithunian • Lettisch/Latvian • Estnisch/Estonian • Hungarian/Ungarisch	Latin • CE-Fonts	TCentral HCentral plus all ... CE	20
Saami/Saamisch	Latin • SamoFonts	Nimbus Roman SA Nimbus Sans SA	23
Icelandic/Isländisch Faeroese/Färöisch	Latin • PolarFonts	Nimbus Roman IC Nimbus Sans IC	24
Welsh/Walisisch Irish/Irish	Latin • CeltoFonts	Nimbus Roman PQ Nimbus Sans PQ	26
Romanian/Rumänisch	Latin • DacoFonts	Nimbus Roman RO Nimbus Sans RO	28
Turkish/Türkisch	Latin • TurkoFonts	Nimbus Roman TU Nimbus Sans TU	30
Türkisch/Turkish Rumänisch/Romanian Ungarisch/Hungarian • Aserbaijani/Aserbaidshanisch	Latin • BalkanFonts	Thourque Pannonica	32
Basque/Baskisch	Latin • BaskoFonts	NimbusRoman BS NimbusSans BS	34
Greek/Griechisch	Greek • DelFonts	Tiryms/Olympica	36
Georgisch/Georgian	Georgian • OrientFonts	Amirani, Kartli	40
Armenisch/Armenian	Armenian • OrientFonts	Mesrop, Sajat Nova	41
Koptisch/Coptic	Coptic • OrientFonts	Pachomius	41
Vietnamese + ...	Far East • SinoFonts	EastAsia Roman EastAsia Sans	44

Language • Sprache	Script • Schrift • Font-Series	Sample Fonts	Page
Transliteration	Flying Accents • MosFonts	TAccents, HAccents	46
	Phonetics • MosFonts	Trubetzkoj, Phonetica	47
	Near East • OrientFonts	Sumertime	39
	India • IndoFonts	SouthAsia Roman SouthAsia Sans	42
	Chinese • SinoFonts	Pinyin Roman Pinyin Sans	45
Classical Greek	Greek • DelFonts	Agora, Parmenides	38
Scientific Cyrillic	Cyrillic • MosFonts	Moskva, Ladoga RomanCyrillic	15
Cyrillic, Turk languages	Cyrillic • MosFonts	Ladoga CyrTurk Roman CyrTurk	17
Old Church Slavonic	Cyrillic • MosFonts	Method	18
	Glagolitic • MosFonts	Kirill, Glagol	19
Deutsch/German	Fraktur • SpecFonts	Breitkopf Fraktur	48
Deutsch/German	Simplified Latin • SpecFonts	Lesebuch, Fibelschrift	
Frühneuhochdeutsch	Latin • SpecFonts	Ougenweide	
Esperanto	Latin • SpecFonts	HEesperanto	
Old Icelandic	Latin • SpecFonts	Thule Roman, Sans	
Various	Cross-Platform, Internet Text Converter		49
			50
Standard Western Fonts	CoreFonts		51
Other			
Prices, Preise	Mac-Fonts		52
	Win-Fonts		57
Distributors, Distributoren			59



Bitte NICHT lesen!

- Alle Macintosh-Fonts von MacCampus werden **komplett** geliefert, mit sauberen (!) Bildschirm-fonts, Druckerfonts (fast immer im Type 1- und im TrueType-Format) und Tastaturreibern (sofern nötig). Selbstverständlich sind jeweils alle Zeichen der betreffenden Fremdsprache vorhanden.
- Mit allen Fonts erhalten Sie eine ausführliche **Dokumentation**, die Installation, Handhabung, Tastaturbelegung, Codierung usw. beschreibt. Keine Angst, wenn Sie die betreffende Fremdsprache nicht beherrschen – Sie können die Fonts trotzdem benutzen.
- Fremdsprachenfonts tauchen wie „normale“ Fonts im **Schriftmenü** auf und werden dort wie üblich angewählt. In der Regel setzt sich eine Schriftfamilie aus vier Schnitten zusammen (normal – fett – kursiv – fettkursiv). Sie können beliebig zwischen Standardfonts für westliche Sprachen und MacCampus-Fremdsprachenfonts umschalten und sie im Text mischen.
- Alle Fonts genügen höchsten **Qualitätsanforderungen** – selbstverständlich können Sie MacCampus-Fonts auch belichten. Diese Qualität muß aber nicht mit Höchstpreisen bezahlt werden.
- Für den **Datenaustausch** zwischen PCs unter Windows und Macs stehen spezielle Fonts bzw. Text-Konverter zur Verfügung



Please do NOT read!

- All Macintosh font packages contain everything you need to start working immediately: polished screen-fonts, printer-fonts, and, if necessary, keyboard drivers for convenient access to special characters. Of course do all fonts contain every character that is required for the language in question.
- All fonts are completely **documented**; a special booklet covers font basics like installation, use of keyboard drivers etc. Don't worry if you don't speak the foreign language yourself – this is not required for using the fonts!
- Language fonts show up on the **font menu** just like normal fonts and you select them like any other font. Usually, a font family has four weights (plain, bold, italic, bolditalic). Mixing language fonts from MacCampus and "normal" fonts is no problem.
- All fonts are of the highest possible **quality**. You may use them on a ink-jet printer as well as download them to an imagesetter.
- MacCampus offers various solutions for painless **data exchange** between PCs running Windows and Macs in the form of special fonts and converters for text files.
- MacCampus has been around nearly as long as the Mac, and will be around tomorrow; continuous development, support and service are guaranteed.





Cyrillic Fonts

Some facts and general information about our Cyrillic fonts

- ① **Standard Encoding** series supports Apple Cyrillic encoding standard for international compatibility and data exchange. WorldScript-compatible. Languages supported include: Russian, Byelorussian, Ukrainian, Bulgarian, Macedonian, and Serbian.
- ② **Scientific Encoding** series supports educational and scientific requirements by including accented characters, old characters etc. For RomanScript, compatible with all programs.
- ③ **Large selection of high-quality fonts**, designed in cooperation with designers from Russia and other Slavic countries. Text fonts, headline fonts, novelty fonts, calligraphic fonts – everything is available.
- ④ **Many keyboard drivers included:** Russian TypeWriter, Russian Mac Keyboard, Phonetic (Transliteration), Slavic, Bulgarian, Ukrainian etc.
- ⑤ **Fonts widely in use**, strong market presence. Updates and upgrades available.
- ⑥ **System 6, System 7.** and **System 8** supported with keyboard drivers and fonts.
- ⑦ All printers supported, **PostScript** and **QuickDraw**.
- ⑧ **High quality at affordable prices**, educational discounts available.
- ⑨ **Polished bitmaps** for easy on-screen reading, even in small point sizes.

URW 04: RomanCyrillic Pro (p b i bi)

АБВГДЕЁЖЗИЙКЛМНОПРСТУФХЦЧШЩЪЫЬЭЮЯ
абвгдеёжзийклмнопрстуфхцчшщъыьэюя

АБВГДЕЁЖЗИЙКЛМНОПРСТУФХЦЧШЩЪЫЬЭЮЯ
абвгдеёжзийклмнопрстуфхцчшщъыьэюя

АБВГДЕЁЖЗИЙКЛМНОПРСТУФХЦЧШЩЪЫЬЭЮЯ
абвгдеёжзийклмнопрстуфхцчшщъыьэюя

АБВГДЕЁЖЗИЙКЛМНОПРСТУФХЦЧШЩЪЫЬЭЮЯ
абвгдеёжзийклмнопрстуфхцчшщъыьэюя

MosFont 33: Ladoga Pro (p b o bo)

АБВГДЕЁЖЗИЙКЛМНОПРСТУФХЦЧШЩЪЫЬЭЮЯ
абвгдеёжзийклмнопрстуфхцчшщъыьэюя

АБВГДЕЁЖЗИЙКЛМНОПРСТУФХЦЧШЩЪЫЬЭЮЯ
абвгдеёжзийклмнопрстуфхцчшщъыьэюя

АБВГДЕЁЖЗИЙКЛМНОПРСТУФХЦЧШЩЪЫЬЭЮЯ
абвгдеёжзийклмнопрстуфхцчшщъыьэюя

АБВГДЕЁЖЗИЙКЛМНОПРСТУФХЦЧШЩЪЫЬЭЮЯ
абвгдеёжзийклмнопрстуфхцчшщъыьэюя

MosFont 35: RomanCyrillic Pro SC (p, small caps)

АБВГДЕЖЗИЙКЛМНОПРСТУФХЦЧШЩЪЫЬЭЮЯ
0123456789 АБВГДЕЖЗИЙКЛМНОПРСТУФХЦЧШЩЪЫЬЭЮЯ

- **Professional series** Cyrillic fonts; standard encoding
- Three formats supplied: Type 1, Type 1 GX, and TrueType
- Polished bitmaps for 7, 8, 9, 10, 12 points (all weights!)
- Special “Serbian” version included with RomanCyrillic Pro (features special italic characters as used in Serbia)
- Several keyboard drivers included

URW 04: RomanCyrillic Pro S • Serbian italic variant

АБВГДЕЁЖЗИЙКЛМНОПРСТУФХЦЧШЩЪЫЬЭЮЯ

абвгдеёжзийклмнопрстуфхцчшщъыьэюя

АБВГДЕЁЖЗИЙКЛМНОПРСТУФХЦЧШЩЪЫЬЭЮЯ

абвгдеёжзийклмнопрстуфхцчшщъыьэюя

URW 05: RomanCyrillic Pro A • Accented Cyrillic

ÁБВГДÉЁЖЗЙЙКЛМНО́ПРСТУ́ФХЦЧШЩЪЫЬ́Э́Ю́Я́

áбвгдеёжзийклмно́прсту́фхцчшщъыь́э́ю́я́

ÁБВГДÉЁЖЗЙЙКЛМНО́ПРСТУ́ФХЦЧШЩЪЫЬ́Э́Ю́Я́

áбвгдеёжзийклмно́прсту́фхцчшщъыь́э́ю́я́

ÁБВГДÉЁЖЗЙЙКЛМНО́ПРСТУ́ФХЦЧШЩЪЫЬ́Э́Ю́Я́

áбвгдеёжзийклмно́прсту́фхцчшщъыь́э́ю́я́

ÁБВГДÉЁЖЗЙЙКЛМНО́ПРСТУ́ФХЦЧШЩЪЫЬ́Э́Ю́Я́

áбвгдеёжзийклмно́прсту́фхцчшщъыь́э́ю́я́

MosFont 34: Ladoga Pro A • Accented Cyrillic

ÁБВГДÉЁЖЗЙЙКЛМНО́ПРСТУ́ФХЦЧШЩЪЫЬ́Э́Ю́Я́

áбвгдеёжзийклмно́прсту́фхцчшщъыь́э́ю́я́

ÁБВГДÉЁЖЗЙЙКЛМНО́ПРСТУ́ФХЦЧШЩЪЫЬ́Э́Ю́Я́

áбвгдеёжзийклмно́прсту́фхцчшщъыь́э́ю́я́

ÁБВГДÉЁЖЗЙЙКЛМНО́ПРСТУ́ФХЦЧШЩЪЫЬ́Э́Ю́Я́

áбвгдеёжзийклмно́прсту́фхцчшщъыь́э́ю́я́

ÁБВГДÉЁЖЗЙЙКЛМНО́ПРСТУ́ФХЦЧШЩЪЫЬ́Э́Ю́Я́

áбвгдеёжзийклмно́прсту́фхцчшщъыь́э́ю́я́

- **Professional series** Cyrillic fonts; standard encoding
- “A” variant: vowels (Cyrillic and Latin) have **acute accent**
- Polished bitmaps for 7, 8, 9, 10, 12 points (all weights!)
- For textbooks, dictionaries, grammars etc.
- Several keyboard drivers included

MosFont 16: Ladoga (PS & TT), MosFont 4b: Ladoga TT

АБВГДЕЁЖЗИЙКЛМНОПРСТУФХЦЧШЩЪЫЬЭЮЯ
абвгдеёжзийклмнопрстуфхцчшщъыьэюя

АБВГДЕЁЖЗИЙКЛМНОПРСТУФХЦЧШЩЪЫЬЭЮЯ
абвгдеёжзийклмнопрстуфхцчшщъыьэюя

АБВГДЕЁЖЗИЙКЛМНОПРСТУФХЦЧШЩЪЫЬЭЮЯ
абвгдеёжзийклмнопрстуфхцчшщъыьэюя

АБВГДЕЁЖЗИЙКЛМНОПРСТУФХЦЧШЩЪЫЬЭЮЯ
абвгдеёжзийклмнопрстуфхцчшщъыьэюя

MosFont 15: Ladoga Narrow (p b o bo)

АБВГДЕЁЖЗИЙКЛМНОПРСТУФХЦЧШЩЪЫЬЭЮЯ
абвгдеёжзийклмнопрстуфхцчшщъыьэюя

АБВГДЕЁЖЗИЙКЛМНОПРСТУФХЦЧШЩЪЫЬЭЮЯ
абвгдеёжзийклмнопрстуфхцчшщъыьэюя

АБВГДЕЁЖЗИЙКЛМНОПРСТУФХЦЧШЩЪЫЬЭЮЯ
абвгдеёжзийклмнопрстуфхцчшщъыьэюя

АБВГДЕЁЖЗИЙКЛМНОПРСТУФХЦЧШЩЪЫЬЭЮЯ
абвгдеёжзийклмнопрстуфхцчшщъыьэюя

MosFont 24: Ladoga Light/Black (l bl lo blo)

АБВГДЕЁЖЗИЙКЛМНОПРСТУФХЦЧШЩЪЫЬЭЮЯ
абвгдеёжзийклмнопрстуфхцчшщъыьэюя

АБВГДЕЁЖЗИЙКЛМНОПРСТУФХЦЧШЩЪЫЬЭЮЯ
абвгдеёжзийклмнопрстуфхцчшщъыьэюя

АБВГДЕЁЖЗИЙКЛМНОПРСТУФХЦЧШЩЪЫЬЭЮЯ
абвгдеёжзийклмнопрстуфхцчшщъыьэюя

АБВГДЕЁЖЗИЙКЛМНОПРСТУФХЦЧШЩЪЫЬЭЮЯ
абвгдеёжзийклмнопрстуфхцчшщъыьэюя

MosFont 32: Ladoga Block • bold reversed

АБВГДЕЁЖЗИЙКЛМНОПРСТУФ
ХЦЧШЩЪЫЬЭЮЯ абвгдеёжзи
ЙКЛМНОПРСТУФХЦЧШЩЪЫЬЭЮЯ



URW 01: Roman Cyrillic (p semibold i semi-obl)

АБВГДЕЁЖЗИЙКЛМНОПРСТУФХЦЧШЩЪЫЬЭЮЯ

абвгдеёжзийклмнопрстуфхцчшщъыьэюя

АБВГДЕЁЖЗИЙКЛМНОПРСТУФХЦЧШЩЪЫЬЭЮЯ

абвгдеёжзийклмнопрстуфхцчшщъыьэюя

АБВГДЕЁЖЗИЙКЛМНОПРСТУФХЦЧШЩЪЫЬЭЮЯ

абвгдеёжзийклмнопрстуфхцчшщъыьэюя

АБВГДЕЁЖЗИЙКЛМНОПРСТУФХЦЧШЩЪЫЬЭЮЯ

абвгдеёжзийклмнопрстуфхцчшщъыьэюя

URW 02: Garamond Cyrillic (p b i b-obl)

АБВГДЕЁЖЗИЙКЛМНОПРСТУФХЦЧШЩЪЫЬЭЮЯ

абвгдеёжзийклмнопрстуфхцчшщъыьэюя

АБВГДЕЁЖЗИЙКЛМНОПРСТУФХЦЧШЩЪЫЬЭЮЯ

абвгдеёжзийклмнопрстуфхцчшщъыьэюя

АБВГДЕЁЖЗИЙКЛМНОПРСТУФХЦЧШЩЪЫЬЭЮЯ

абвгдеёжзийклмнопрстуфхцчшщъыьэюя

АБВГДЕЁЖЗИЙКЛМНОПРСТУФХЦЧШЩЪЫЬЭЮЯ

абвгдеёжзийклмнопрстуфхцчшщъыьэюя

MosFont 31: Kronstadt (p b o bo)

АБВГДЕЁЖЗИЙКЛМНОПРСТУФХЦЧШЩЪЫЬЭЮЯ

абвгдеёжзийклмнопрстуфхцчшщъыьэюя

АБВГДЕЁЖЗИЙКЛМНОПРСТУФХЦЧШЩЪЫЬЭЮЯ

абвгдеёжзийклмнопрстуфхцчшщъыьэюя

АБВГДЕЁЖЗИЙКЛМНОПРСТУФХЦЧШЩЪЫЬЭЮЯ

абвгдеёжзийклмнопрстуфхцчшщъыьэюя

АБВГДЕЁЖЗИЙКЛМНОПРСТУФХЦЧШЩЪЫЬЭЮЯ

абвгдеёжзийклмнопрстуфхцчшщъыьэюя

- **Cyrillic fonts** supporting Mac standard encoding
- Formats supplied: PostScript Type 1, and TrueType
- Polished bitmaps for all weights
- Several keyboard drivers included (Russian, phonetic etc.)

DESign 17: Faktor • Headline & Poster Font

**АБВГДЕЁЖЗИЙКЛМНОПРСТУФХЦЧ
ШЩЪЫЬЭЮЯ абвгдеёжзийклмно
рстуфхцчшщъыьэюя 0 1 2 3 4 5 6 7 8 9**

DESign 18: Inessa Cyr • Calligraphic Handwriting

*АБВГДЕЁЖЗИЙКЛМНОПРСТУ
ФХЦЧШЩЪЫЬЭЮЯ
абвгдеёжзийклмнопрстуфхцчшщъыьэюя 123*

DESign 19: Magister Cyr • New Text & Headline Font

**АБВГДЕЁЖЗИЙКЛМНОПРС
ТУФХЦЧШЩЪЫЬЭЮЯ &?!
абвгдеёжзийклмнопрстуфхцчш
щъыьэюя 0123456789**

Design: Evgenij Dobrovinskij / DESign™, Moscow

MosFont 21: Mashinka • The Typewriter Font

АБВГДЕЁЖЗИЙКЛМНОПРСТУФХЦЧШЩЪЫЬЭЮЯ
АБВГДЕЁЖЗИЙКЛМНОПРСТУФХЦЧШЩЪЫЬЭЮЯ

URW 03: Letter Gothic Cyrillic • monospaced

АБВГДЕЕЖЗИИКЛМНОПРСТУФХЦЧШЩЪЫЬЭЮЯ
АБВГДЕЕЖЗИИКЛМНОПРСТУФХЦЧШЩЪЫЬЭЮЯ

MosFont 29: Cyrillic Fonts by Lawrence Olliffe

Batumi • Text font

АБВГДЕЁЖЗИЙКЛМНОПРСТУФХЦЧШ
ЩЪЫЬЭЮЯ 0123456789 ?!
абвгдеёжзийклмнопрстуфхцчшщъыьэюя

Schechtel • Jugendstil, Moderne

АБВГДЕЁЖЗИЙКЛМН
ОПРСТУФХЦЧШЩЪЫЬ
ЭЮЯ абвгдежзийклмн
опрстуфхцчшщъыьэюя

Russian Open • SmallCaps

АБВГДЕЁЖЗИЙКЛМНОПРС
ТУФХЦЧШЩЪЫЬЭЮЯ ?!%&
АБВГДЕЁЖЗИЙКЛМНОПРСТУФХЦЧ
ШЩЪЫЬЭЮЯ 0123456789



MosFont 16: Moskva (PS) • Moskva 4a: Moskva TT

АБВГДЕЁЖЗИЙКЛМНОПРСТУФХЦЧШЩЪЫЬЭЮЯ

абвгдеёжзийклмнопрстуфхцчшщъыьэюя áéíóúýáýíëú ёѐѡ

АБВГДЕЁЖЗИЙКЛМНОПРСТУФХЦЧШЩЪЫЬЭЮЯ

абвгдеёжзийклмнопрстуфхцчшщъыьэюя áéíóúýáýíëú ёѐѡ

АБВГДЕЁЖЗИЙКЛМНОПРСТУФХЦЧШЩЪЫЬЭЮЯ

абвгдеёжзийклмнопрстуфхцчшщъыьэюя áéíóúýáýíëú ёѐѡ

АБВГДЕЁЖЗИЙКЛМНОПРСТУФХЦЧШЩЪЫЬЭЮЯ

абвгдеёжзийклмнопрстуфхцчшщъыьэюя áéíóúýáýíëú ёѐѡ

MosFont 19: Ladoga (PS) • Moskva 4b: Ladoga TT

АБВГДЕЁЖЗИЙКЛМНОПРСТУФХЦЧШЩЪЫЬЭЮЯ

абвгдеёжзийклмнопрстуфхцчшщъыьэюя áéíóúýáýíëú ёѐѡ

АБВГДЕЁЖЗИЙКЛМНОПРСТУФХЦЧШЩЪЫЬЭЮЯ

абвгдеёжзийклмнопрстуфхцчшщъыьэюя áéíóúýáýíëú ёѐѡ

АБВГДЕЁЖЗИЙКЛМНОПРСТУФХЦЧШЩЪЫЬЭЮЯ

абвгдеёжзийклмнопрстуфхцчшщъыьэюя áéíóúýáýíëú ёѐѡ

АБВГДЕЁЖЗИЙКЛМНОПРСТУФХЦЧШЩЪЫЬЭЮЯ

абвгдеёжзийклмнопрстуфхцчшщъыьэюя áéíóúýáýíëú ёѐѡ

MosFont 37: Moskva Dot • Cyrillic with Dot Accent Below

Белѐет парус одинокий в тумане моря голубом

А Е И О У Ъ Я Э Ы Ё Ю І V а е и о у я э ы ё ю ъ і v

MosFont 38: Moscow Transit • Automatic Transliteration

Cyrillic

АБВГДЕЁЖЗИЙКЛМНОПРСТУФХЦЧШЩЪЫЬЭЮЯ

абвгдеёжзийклмнопрстуфхцчшщъыьэюя áéíóúýáýíëú ёѐѡ

M. Transit

ABVGDEĚŽZIJKLMNOPRSTUFCHCČŠŠČ”Y’ÉJUJA

abvгдеěžzijklmnoprstufchcčššč”y’ėjuja áéíóújáéýėju ěfy

MosFont 39: Scientific Small Caps (Cyrillic and Latin)

ROMANCYRILLIC-SC & TACCENTS-SC

КИРИЛЛИЦА & ĽATIN AČĚNTŠ ĽĽĐĐ ĪI ETC.

БЕЛѐЕТ ПÁРУС ОДИНО́КИЙ В ТУМА́НЕ МО́РЯ ГОЛУБО́М

MosFont 18: Roman CyrTurk • Non-Slavic Cyrillic

АБВабв + ГГКкJjKкЖжĂăĚěЗзЧчКкКүYvVүҮ

әӨәӘҺһŷŷӰӰӱӱӲӲӳӳӴӴӵӵӶӶӷӷӸӸӹӹӺӺӻӻӼӼӽӽӾӾӿӿ

АБВабв + ГГКкJjKкЖжĂăĚěЗзЧчКкКүYvVүҮ

әӨәӘҺһŷŷӰӰӱӱӲӲӳӳӴӴӵӵӶӶӷӷӸӸӹӹӺӺӻӻӼӼӽӽӾӾӿӿ

АБВабв + ГгКкJjKкЖжĂăĚěЗзЧчКкКүYvVүҮ

әӨәӘҺһŷŷӰӰӱӱӲӲӳӳӴӴӵӵӶӶӷӷӸӸӹӹӺӺӻӻӼӼӽӽӾӾӿӿ

АБВабв + ГГКкJjKкЖжĂăĚěЗзЧчКкКүYvVүҮ

әӨәӘҺһŷŷӰӰӱӱӲӲӳӳӴӴӵӵӶӶӷӷӸӸӹӹӺӺӻӻӼӼӽӽӾӾӿӿ

MosFont 17: Ladoga CyrTurk • Non-Slavic Cyrillic

АБВабв + ГГКкJjKкЖжĂăĚěЗзЧчКкКүYvVүҮ

әӨәӘҺһŷŷӰӰӱӱӲӲӳӳӴӴӵӵӶӶӷӷӸӸӹӹӺӺӻӻӼӼӽӽӾӾӿӿ

АБВабв + ГГКкJjKкЖжĂăĚěЗзЧчКкКүYvVүҮ

әӨәӘҺһŷŷӰӰӱӱӲӲӳӳӴӴӵӵӶӶӷӷӸӸӹӹӺӺӻӻӼӼӽӽӾӾӿӿ

АБВабв + ГгКкJjKкЖжĂăĚěЗзЧчКкКүYvVүҮ

әӨәӘҺһŷŷӰӰӱӱӲӲӳӳӴӴӵӵӶӶӷӷӸӸӹӹӺӺӻӻӼӼӽӽӾӾӿӿ

АБВабв + ГГКкJjKкЖжĂăĚěЗзЧчКкКүYvVүҮ

әӨәӘҺһŷŷӰӰӱӱӲӲӳӳӴӴӵӵӶӶӷӷӸӸӹӹӺӺӻӻӼӼӽӽӾӾӿӿ

- **Languages:** Uzbek, Azerbaijani, Turkmen, Tatar, Kazakh, Kirgiz, Chuvash, Bashkir, Karakalpak, Nogai, Kumyk ...
- **Sprachen:** Usbekisch, Aserbaidchanisch, Turkmenisch, Tatarisch, Kasachisch, Kirgisisch, Tschuvaschisch, Baschkirisch, Karakalpakisch, Nogaiisch, Kumykisch ...
- Packages use Scientific Cyrillic encoding
- Type 1 and TrueType; polished bitmaps
- Keyboard drivers supplied, but use is optional

MosFont 20: Kirill and Glagol

† Ɔ
 Ɔ
 Ɔ
 Ɔ
 Ɔ
 Ɔ
 Ɔ

- Package includes two fonts:
 - Kirill** – Bulgarian or round variant of Glagolitic script
 - Glagol** – Croatian or square variant of Glagolitic script
- The standard in Academic publishing; extensive documentation
- Complete character set with all common variants
- 50 accents and diacritis for upper and lower case letters
- Compatible with Method font
- Type 1 and TrueType; polished bitmaps

† Ɔ
 Ɔ

CE Fonts (Central Eastern Europe • Osteuropa)

General Information • Allgemeine Informationen

- ❶ **Languages:** Polish, Czech, Slovak, Sorabian, Slovenian, Croatian, Hungarian, Estonian, Lithuanian, Latvian, German, Finnish, and English
- ❷ **Sprachen:** Polnisch, Tschechisch, Slowakisch, Slowenisch, Kroatisch, Sorbisch, Ungarisch, Estnisch, Lettisch, Litauisch, Deutsch, Finnisch, Englisch
- ❸ **Standard encoding** for international compatibility and data exchange. WorldScript-compatible, but not required – fonts work with Roman-Script, too!
- ❹ Font formats: **PostScript Type 1**, **TrueType**, and Type 1 GX.
- ❺ All weights with **polished bitmaps** for easy on-screen reading.
- ❻ Dozens of **keyboard drivers** included: country-specific (Polish, Czech, Slovak, Lithunian...) and general-purpose (US CE, Deutsch CE etc.)
- ❼ **Large selection** of high-quality fonts, custom conversion service available at fixed prices.
- ❽ **System 6**, **System 7** and **System 8** supported with keyboard drivers and fonts.
- ❾ **Converter** available for data exchange between Windows EE and Mac CE, supports plain ASCII text and RTF files.

CE Character Set:

ABC + Á É Í Ó Ú Ý Ā Ē Ī Ō Ū Š Č Ž Ť Ď Ě Ř Ń Ĺ Ŕ Ņ Ś Ć Ż Ę Ž Ä Ö
 Û Ğ Ķ Ń Ŗ Ľ Ô Ű Ą Ę ĩ Ů Ő Ű Đ Ľ Ľ ...

abcd + ā ē ī ō ū á é í ó ú ý í ĺ đ ť đ ĺ ž č š ě ž ř ŋ ą ę ĩ ů ǯ ǰ ĺ ř ä ö ü è ž
 ŭ ů ő ô ß...



CE 01a: TCentral (p b i bi) • CE 02a: TCentral TT

ABCDEFGHIJKLM abcdefghijklmn *ABCDEFGHIJKLM abcdefghijklmnop*
ABCDEFGHIJKLM abcdefghijklmn *ABCDEFGHIJKLM abcdefghijklmn*

CE 01b: HCentral (p b i bi) • CE 02b: HCentral TT

ABCDEFGHIJKLM abcdefghijklmn *ABCDEFGHIJKLM abcdefghijklmno*
ABCDEFGHIJKLM abcdefghijklm *ABCDEFGHIJKLM abcdefghijklmn*

CE 03: HCentral Light/Black (l bl lo blo)

ABCDEFGHIJKLM abcdefghijklmn *ABCDEFGHIJKLM abcdefghijklmn*
ABCDEFGHIJKL abcdefghijkl *ABCDEFGHIJKL abcdefghijkl*

CE 04: Paltus CE (p b i bi)

ABCDEFGHIJKLM abcdefghijklmn *ABCDEFGHIJKLM abcdefghijklmnopq*
ABCDEFGHIJKLM abcdefghijklm *ABCDEFGHIJKLM abcdefghijklmn*

CE 05: Schoolbook CE (p b i bi)

ABCDEFGHIJKLM abcdefghijklm *ABCDEFGHIJKLM abcdefghijklmn*
ABCDEFGHIJKLM abcdefghijk *ABCDEFGHIJKLM abcdefghijklm*

CE 06: Nimbus Mono CE & Courier CE (p b o bo)

ABCDEFGHIJKLM abcdefghijklm *ABCDEFGHIJKLM abcdefghi jklmn*
ABCDEFGHIJKLM abcdefghijklm *ABCDEFGHIJKLM abcdefghi jklmn*

CE 07: HCentral Narrow (p b o bo)

ABCDEFGHIJKLM abcdefghijklmn *ABCDEFGHIJKLM abcdefghijklmnop*
ABCDEFGHIJKLM abcdefghijklmn **ABCDEFGHIJKLM abcdefghijklmn**

CE 08: Nimbus Roman CE (p b i bi)

ABCDEFGHIJKLM abcdefghijklmn *ABCDEFGHIJKLM abcdefghijklmnop*
ABCDEFGHIJKLM abcdefghijklmn **ABCDEFGHIJKLM abcdefghijklmn**

CE 09: Nimbus Sans CE (p b i bi)

ABCDEFGHIJKLM abcdefghijklmn *ABCDEFGHIJKLM abcdefghijklmno*
ABCDEFGHIJKLM abcdefghijklm **ABCDEFGHIJKLM abcdefghijklmn**

CE 10: TCentral SC (p, small caps)

SMALL CAPS FOR EAST EUROPEAN LANGUAGES 0123456789?!

CE 11: Magister CE (book)

ABCDEFGHIJKLMNOPQR STUVWXYZ 01234567890?!
abcdefghijklmnopqrstuwxxyz äöüß ñãõ áéíóú àèìòù çåæœ ...

CE Utilities

Included with every CE font package, this disk contains the keyboard drivers to work in any CE language; several language-specific and ingenious general-purpose CE drivers for many countries included. No need to learn new keyboards!

Need more CE fonts?

Custom conversion service available at fixed prices!

SamoFont 01: Nimbus Roman SA (p b i bi)

ABC + đ Đ ƒ F č Č š Š ž Ž ń Ń ŋ Ņ

ABC + đ Đ ƒ F č Č š Š ž Ž ń Ń ŋ Ņ

ABC + đ Đ ƒ F č Č š Š ž Ž ń Ń ŋ Ņ

ABC + đ Đ ƒ F č Č š Š ž Ž ń Ń ŋ Ņ

SamoFont 02: Nimbus Sans SA (p b o bo)

ABC + đ Đ ƒ F č Č š Š ž Ž ń Ń ŋ Ņ

ABC + đ Đ ƒ F č Č š Š ž Ž ń Ń ŋ Ņ

ABC + đ Đ ƒ F č Č š Š ž Ž ń Ń ŋ Ņ

ABC + đ Đ ƒ F č Č š Š ž Ž ń Ń ŋ Ņ

SamoFont 07: Nimbus Roman SA SC (p, small caps)

ABC + Đ Đ ƒ F č Č š Š ž Ž ń Ń ŋ Ņ

SamoFont 10: Magister SA (book)

ABC + đ Đ ƒ F č Č š Š ž Ž ń Ń ŋ Ņ

More SamoFonts under development!

- Saami • Samisk • Saamisch • Lappish • Lappisch
- Northern, Lule, and Southern Saami
- Hand-edited bitmaps for all weights
- PostScript and TrueType included
- No special keyboard driver required

PolarFont 01: NimbusRoman IC (p b i bi)

ABCabc + Þ þ Ð ð Ý ý
ABCabc + Þ þ Ð ð Ý ý

ABCabc + Þ þ Ð ð Ý ý
ABCabc + Þ þ Ð ð Ý ý

PolarFont 02: NimbusSans IC (p b o bo)

ABCabc + Þ þ Ð ð Ý ý
ABCabc + Þ þ Ð ð Ý ý

ABCabc + Þ þ Ð ð Ý ý
ABCabc + Þ þ Ð ð Ý ý

PolarFont 03: NimbusMono & Courier IC (p b o bo)

ABCabc + Þ þ Ð ð Ý ý
ABCabc + Þ þ Ð ð Ý ý

ABCabc + Þ þ Ð ð Ý ý
ABCabc + Þ þ Ð ð Ý ý

PolarFont 04: Sans Narrow IC (p b o bo)

ABCabc+ÞþÐðÝý
ABCabc+ÞþÐðÝý

ABCabc+ÞþÐðÝý
ABCabc+ÞþÐðÝý

PolarFont 05: Paltus IC (p b i bi)

ABCabc + Þ þ Ð ð Ý ý
ABCabc + Þ þ Ð ð Ý ý

ABCabc + Þ þ Ð ð Ý ý
ABCabc + Þ þ Ð ð Ý ý

PolarFont 06: Schoolbook IC (p b i bi)

ABCabc + Þ þ Ð ð Ý ý
ABCabc + Þ þ Ð ð Ý ý

ABCabc + Þ þ Ð ð Ý ý
ABCabc + Þ þ Ð ð Ý ý



- Standard character set with additional support for **Icelandic** and **Faeroese**
- Standard Macintosh encoding for Icelandic
- PostScript Type 1 and TrueType included
- Polished screen-fonts for all weights (including 7, 8, and 9 points for Roman and Sans)
- Keyboard drivers included

PolarFont 07: NimbusRoman IC SC (p, small caps)

A B C A B C + P p Đ đ Ý ý 0123456789?!

PolarFont 08: CampusSans LB IC (l bl o bl-o)

ABCabc + P p Đ đ Ý ý **ABCabc + P p Đ đ Ý ý**
ABCabc + P p Đ đ Ý ý **ABCabc + P p Đ đ Ý ý**

PolarFont 10: Magister IC (book)

A B C a b c + P p Đ đ Ý ý 0123456789!?



- Standardzeichensatz mit **isländischen** und **färöischen** Zusatzzeichen
- Macintosh-Standard-Codierung für das Isländische
- PostScript Type 1- and TrueType-Version enthalten
- Saubere Bildschirmschrift für alle Schnitte (Roman und Sans mit 7-Punkt, 8-Punkt, 9-Punkt!)
- Tastatortreiber werden mitgeliefert

CeltoFont 01: NimbusRoman PQ (p b i bi)

ABCabc + Ÿŷ ÿý Ýý Ŵŵ Ŷŵ Ÿŵ Źŵ
 ABC + Ÿŷ ÿý Ýý Ŵŵ Ŷŵ Ÿŵ Źŵ
 ABCabc + Ÿŷ ÿý Ýý Ŵŵ Ŷŵ Ÿŵ Źŵ
 ABC + Ÿŷ ÿý Ýý Ŵŵ Ŷŵ Ÿŵ Źŵ

CeltoFont 02: NimbusSans PQ (p b o bo)

ABCabc + Ÿŷ ÿý Ýý Ŵŵ Ŷŵ Ÿŵ Źŵ
 ABC + Ÿŷ ÿý Ýý Ŵŵ Ŷŵ Ÿŵ Źŵ
 ABCabc + Ÿŷ ÿý Ýý Ŵŵ Ŷŵ Ÿŵ Źŵ
 ABC + Ÿŷ ÿý Ýý Ŵŵ Ŷŵ Ÿŵ Źŵ

CeltoFont 03: NimbusMono/Courier PQ (p b o bo)

ABCabc + Ÿŷ ÿý Ýý Ŵŵ Ŷŵ Ÿŵ Źŵ
 ABC + Ÿŷ ÿý Ýý Ŵŵ Ŷŵ Ÿŵ Źŵ
 ABCabc + Ÿŷ ÿý Ýý Ŵŵ Ŷŵ Ÿŵ Źŵ
 ABC + Ÿŷ ÿý Ýý Ŵŵ Ŷŵ Ÿŵ Źŵ

CeltoFont 04: Sans Narrow PQ (p b o bo)


ABC abc + Ÿŷ ÿý Ýý Ŵŵ Ŷŵ Ÿŵ Źŵ
 ABC abc + Ÿŷ ÿý Ýý Ŵŵ Ŷŵ Ÿŵ Źŵ
 ABC abc + Ÿŷ ÿý Ýý Ŵŵ Ŷŵ Ÿŵ Źŵ
 ABC abc + Ÿŷ ÿý Ýý Ŵŵ Ŷŵ Ÿŵ Źŵ

CeltoFont 05: Paltus PQ (p b i bi)

ABCabc + Ÿŷ ÿý Ýý Ŵŵ Ŷŵ Ÿŵ Źŵ
 ABC + Ÿŷ ÿý Ýý Ŵŵ Ŷŵ Ÿŵ Źŵ
 ABCabc + Ÿŷ ÿý Ýý Ŵŵ Ŷŵ Ÿŵ Źŵ
 ABC + Ÿŷ ÿý Ýý Ŵŵ Ŷŵ Ÿŵ Źŵ

CeltoFont 06: Schoolbook PQ (p b i bi)

ABCabc + Ÿŷ ÿý Ýý Ŵŵ Ŷŵ Ÿŵ Źŵ
 ABC + Ÿŷ ÿý Ýý Ŵŵ Ŷŵ Ÿŵ Źŵ
 ABCabc + Ÿŷ ÿý Ýý Ŵŵ Ŷŵ Ÿŵ Źŵ
 ABC + Ÿŷ ÿý Ýý Ŵŵ Ŷŵ Ÿŵ Źŵ

- 
 • Standard character set with additional support for **Irish** and **Welsh** (Gaelic and Cymric)
- Apple standard encoding for Irish
- PostScript Type 1 and TrueType included
- Polished screen-fonts for all weights (including 7, 8, and 9 points for Roman and Sans)
- Keyboard drivers included

CeltoFont 07: NimbusRoman PQ SC (p, small caps)

ABCABC + Ŷŷ ŸŹ ŹŹ Ŵŵ Ŷŵ Ÿŵ Źŵ 0123456789!?

CeltoFont 08: CampusSans LB PQ (l bl o blo)

ABCabc + Ŷŷ ŸŹ ŹŹ Ŵŵ Ŷŵ Ÿŵ Źŵ **ABC + Ŷŷ ŸŹ ŹŹ Ŵŵ Ŷŵ Ÿŵ Źŵ**
ABCabc + Ŷŷ ŸŹ ŹŹ Ŵŵ Ŷŵ Ÿŵ Źŵ **ABC + Ŷŷ ŸŹ ŹŹ Ŵŵ Ŷŵ Ÿŵ Źŵ**

CeltoFont 10: Magister PQ (book)

ABCabc + Ŷŷ ŸŹ ŹŹ Ŵŵ Ŷŵ Ÿŵ Źŵ 0123456789!?



- Standardzeichensatz mit **irischen** und **walisischen** Zusatzzeichen
- Macintosh-Standard-Codierung für das Irische
- PostScript Type 1- and TrueType-Version enthalten
- Saubere Bildschirmschrift für alle Schnitte (Roman und Sans mit 7-Punkt, 8-Punkt, 9-Punkt!)
- Tastatortreiber werden mitgeliefert

DacoFont 01: NimbusRoman RO (p b i bi)

ABC abc + Ș ș Ț ț Ă ă Î î Â â ABC abc + Ș ș Ț ț Ă ă Î î Â â
ABC abc + Ș ș Ț ț Ă ă Î î Â â ABC abc + Ș ș Ț ț Ă ă Î î Â â

DacoFont 02: NimbusSans RO (p b o bo)

ABC abc + Ș ș Ț ț Ă ă Î î Â â ABC abc + Ș ș Ț ț Ă ă Î î Â â
ABC abc + Ș ș Ț ț Ă ă Î î Â â ABC abc + Ș ș Ț ț Ă ă Î î Â â

DacoFont 03: NimbusMono/Courier RO (p b o bo)

ABCabc + Șș Țț Ăă Îî Ââ ABCabc + Șș Țț Ăă Îî Ââ
ABCabc + Șș Țț Ăă Îî Ââ ABCabc + Șș Țț Ăă Îî Ââ

DacoFont 04: Sans Narrow RO (p b o bo)

ABCabc+ȘșȚțĂăÎîÂâ ABCabc+ȘșȚțĂăÎîÂâ
ABCabc+ȘșȚțĂăÎîÂâ ABCabc+ȘșȚțĂăÎîÂâ

DacoFont 05: Paltus RO (p b i bi)

ABC abc + Ș ș Ț ț Ă ă Î î Â â ABC abc + Ș ș Ț ț Ă ă Î î Â â
ABC abc + Ș ș Ț ț Ă ă Î î Â â ABC abc + Ș ș Ț ț Ă ă Î î Â â

DacoFont 06: Schoolbook RO (p b i bi)

ABC abc + Ș ș Ț ț Ă ă Î î Â â ABC abc + Ș ș Ț ț Ă ă Î î Â â
ABC abc + Ș ș Ț ț Ă ă Î î Â â ABC abc + Ș ș Ț ț Ă ă Î î Â â



- Standard character set with additional support for **Romanian**
- Apple standard encoding for Romanian
- Fonts compatible with Romanian Mac OS
- PostScript Type 1 and TrueType included
- Polished screen-fonts for all weights (including 7, 8, and 9 points for Roman and Sans)
- Romanian keyboard driver included

DacoFont 07: NimbusRoman RO SC (p, small caps)

ABC ABC + Ș ș Ț ț Ă ă Î î Â â 0123456789

DacoFont 08: CampusSans Light/Black RO (l bl lo blo)

ABC abc + Ș ș Ț ț Ă ă Î î Â â **ABC abc + Ș ș Ț ț Ă ă Î î Â â**
ABC abc + Ș ș Ț ț Ă ă Î î Â â ***ABC abc + Ș ș Ț ț Ă ă Î î Â â***

DacoFont 10: Magister RO (book)

ABC abc + Ș ș Ț ț Ă ă Î î Â â 0123456789



- Standardzeichensatz mit **rumänischen** Zusatzzeichen
- Macintosh-Standard-Codierung für das Rumänische
- Kompatibel mit dem rumänischen Betriebssystem
- PostScript Type 1- and TrueType-Version enthalten
- Saubere Bildschirmschrift für alle Schnitte (Roman und Sans mit 7-Punkt, 8-Punkt, 9-Punkt!)
- Rumänischer Tastatortreiber wird mitgeliefert

TurkoFont 01: NimbusRoman TU (p b i bi)

ABC abc + Ğğ Şş Çç İ ı Öö Üü
ABC abc + Ğğ Şş Çç İ ı Öö Üü

ABC abc + Ğğ Şş Çç İ ı Öö Üü
ABC abc + Ğğ Şş Çç İ ı Öö Üü

TurkoFont 02: NimbusSans TU (p b o bo)

ABC abc + Ğğ Şş Çç İ ı Öö Üü
ABC abc + Ğğ Şş Çç İ ı Öö Üü

ABC abc + Ğğ Şş Çç İ ı Öö Üü
ABC abc + Ğğ Şş Çç İ ı Öö Üü

TurkoFont 03: NimbusMono/Courier TU (p b o bo)

ABC abc + ĞğŞşÇçİıÖöÜü
ABC abc + ĞğŞşÇçİıÖöÜü

ABC abc + ĞğŞşÇçİıÖöÜü
ABC abc + ĞğŞşÇçİıÖöÜü

TurkoFont 04: Sans Narrow TU (p b o bo)

ABCabc + ĞğŞşÇçİıÖöÜü
ABCabc + ĞğŞşÇçİıÖöÜü

ABCabc + ĞğŞşÇçİıÖöÜü
ABCabc + ĞğŞşÇçİıÖöÜü

TurkoFont 05: Paltus TU (p b i bi)

ABCabc + Ğğ Şş Çç İ ı Öö Üü
ABCabc + Ğğ Şş Çç İ ı Öö Üü

ABCabc + Ğğ Şş Çç İ ı Öö Üü
ABCabc + Ğğ Şş Çç İ ı Öö Üü

TurkoFont 06: Schoolbook TU (p b i bi)

ABCabc + Ğğ Şş Çç İ ı Öö Üü
ABCabc + Ğğ Şş Çç İ ı Öö Üü

ABCabc + Ğğ Şş Çç İ ı Öö Üü
ABCabc + Ğğ Şş Çç İ ı Öö Üü



- Standard character set with additional support for **Turkish**
- Apple standard encoding for Turkish
- Fonts compatible with Turkish Mac OS
- PostScript Type 1 and TrueType included
- Polished screen-fonts for all weights (including 7, 8, and 9 points for Roman and Sans)
- Turkish keyboard driver included



TurkoFont 07: NimbusRoman TU SC (p, small caps)

ABCABC + Ğ ğ Ş ş Ç ç İ i Ö ö Ü ü 0123456789

TurkoFont 08: CampusSans Light/Black TU (l lo bl blo)

ABC abc + Ğ ğ Ş ş Ç ç İ i Ö ö Ü ü

AB Cabc + Ğ ğ Ş ş Ç ç İ i Ö ö Ü ü

ABC abc + Ğ ğ Ş ş Ç ç İ i Ö ö Ü ü

AB Cabc + Ğ ğ Ş ş Ç ç İ i Ö ö Ü ü

TurkoFont 10: Magister TU (book)

ABCabc + Ğ ğ Ş ş Ç ç İ i Ö ö Ü ü ... 0123456789?!



- Standardzeichensatz mit **türkischen** Zusatzzeichen
- Macintosh-Standard-Codierung für das Türkische
- Kompatibel mit dem türkischen Betriebssystem
- PostScript Type 1- and TrueType-Version enthalten
- Saubere Bildschirmschrift für alle Schnitte (Roman und Sans mit 7-Punkt, 8-Punkt, 9-Punkt!)
- Türkischer Tastatortreiber wird mitgeliefert

BalkanFont 1a: Thourque (p b i bi)

ABCabc + Ăă Őő Űú İı Şş Ţţ Ğğ Əə ABCabc + Ăă Őő Űú İı Şş Ţţ Ğğ Əə
ABCabc + Ăă Őő Űú İı Şş Ţţ Ğğ Əə ABCabc + Ăă Őő Űú İı Şş Ţţ Ğğ Əə

BalkanFont 1b: Pannonica (p b o bo)

ABCabc + Ăă Őő Űú İı Şş Ţţ Ğğ Əə ABCabc + Ăă Őő Űú İı Şş Ţţ Ğğ Əə
ABCabc + Ăă Őő Űú İı Şş Ţţ Ğğ Əə ABCabc + Ăă Őő Űú İı Şş Ţţ Ğğ Əə

BalkanFont 02: AvantTurk (p b o bo)

ABCabc + Ăă Őő Űú İı Şş Ţţ Ğğ ABCabc + Ăă Őő Űú İı Şş Ţţ Ğğ
ABCabc + Ăă Őő Űú İı Şş Ţţ Ğğ ABCabc + Ăă Őő Űú İı Şş Ţţ Ğğ

BalkanFont 03: Galata (p b o bo)


ABCabc + Ăă Őő Űú İı Şş Ţţ Ğğ ABCabc + Ăă Őő Űú İı Şş Ţţ Ğğ
ABCabc + Ăă Őő Űú İı Şş Ţţ Ğğ ABCabc + Ăă Őő Űú İı Şş Ţţ Ğğ

BalkanFont 04: Pannonica Light/Black (l l-o bl bl-o)

ABCabc + Ăă Őő Űú İı Şş Ţţ Ğğ **ABCabc + Ăă Őő Űú İı Şş Ţţ Ğğ**
ABCabc + Ăă Őő Űú İı Şş Ţţ Ğğ **ABCabc + Ăă Őő Űú İı Şş Ţţ Ğğ**

BalkanFont 05: Paltus Balkan (p b i bi)

ABCabc + Ăă Őő Űú İı Şş Ţţ Ğğ Əə ABCabc + Ăă Őő Űú İı Şş Ţţ Ğğ Əə
ABCabc + Ăă Őő Űú İı Şş Ţţ Ğğ Əə ABCabc + Ăă Őő Űú İı Şş Ţţ Ğğ Əə

-  Standard character set with additional support for **Turkish, Romanian, Hungarian** (all), and **Azerbaijani** (some)
- “Med” fonts support **Maltese**, too
- PostScript Type 1 and TrueType included
- Polished screen-fonts for all weights
- No special keyboard driver required

BalkanFont 06: Schoolbook Balkan

ABCabc + Ăă Őő Űű ĩ Şş Țț Ğğ Əə **ABCabc + Ăă Őő Űű ĩ Şş Țț Ğğ Əə**
ABCabc + Ăă Őő Űű ĩ Şş Țț Ğğ Əə ***ABCabc + Ăă Őő Űű ĩ Şş Țț Ğğ Əə***

BalkanFont 07: Pannonica Narrow (p b o bo)

ABC abc + Ăă Őő Űű ĩ Şş Țț Ğğ Əə **ABC abc + Ăă Őő Űű ĩ Şş Țț Ğğ Əə**
ABC abc + Ăă Őő Űű ĩ Şş Țț Ğğ Əə ***ABC abc + Ăă Őő Űű ĩ Şş Țț Ğğ Əə***

BalkanFont 08: Nimbus Mono Balkan (p b o bo)

ABCabc + ĂăŐőŰűĭŞşȚțĞğƏə **ABCabc + ĂăŐőŰűĭŞşȚțĞğƏə**
ABCabc + ĂăŐőŰűĭŞşȚțĞğƏə ***ABCabc + ĂăŐőŰűĭŞşȚțĞğƏə***

BalkanFont 09: Nimbus Roman Med (p b i bi)

ABC abc + Ăă Őő Űű ĩ Şş Țț Ğğ Əə Ğğ Əə Hh Ğğ Żż Ćć
ABC abc + Ăă Őő Űű ĩ Şş Țț Ğğ Əə Ğğ Əə Hh Ğğ Żż Ćć
ABC abc + Ăă Őő Űű ĩ Şş Țț Ğğ Əə Ğğ Əə Hh Ğğ Żż Ćć
ABC abc + Ăă Őő Űű ĩ Şş Țț Ğğ Əə Ğğ Əə Hh Ğğ Żż Ćć

BalkanFont 10: Nimbus Sans Med (p b o bo)

ABC abc + Ăă Őő Űű ĩ Şş Țț Ğğ Əə Ğğ Əə Hh Ğğ Żż Ćć
ABC abc + Ăă Őő Űű ĩ Şş Țț Ğğ Əə Ğğ Əə Hh Ğğ Żż Ćć
ABC abc + Ăă Őő Űű ĩ Şş Țț Ğğ Əə Ğğ Əə Hh Ğğ Żż Ćć
ABC abc + Ăă Őő Űű ĩ Şş Țț Ğğ Əə Ğğ Əə Hh Ğğ Żż Ćć



- Standardzeichensatz mit **türkischen, rumänischen, ungarischen und** – teilweise – **aserbaidschanischen** Zusatzzeichen
- “Med”-Fonts zusätzlich auch für das **Maltesische**
- PostScript Type 1- and TrueType-Version enthalten
- Saubere Bildschirmschrift für alle Schnitte
- Kein spezieller Tastatortreiber erforderlich

BaskoFont 01: NimbusRoman BS (p b i bi)

ABC abc + Ñ Ē Ř ű ē ř ABC abc + Ñ Ē Ř ű ē ř
ABC abc + Ñ Ē Ř ű ē ř ABC abc + Ñ Ē Ř ű ē ř

BaskoFont 02: NimbusSans BS (p b o bo)

ABC abc + Ñ Ē Ř ű ē ř ABC abc + Ñ Ē Ř ű ē ř
ABC abc + Ñ Ē Ř ű ē ř ABC abc + Ñ Ē Ř ű ē ř

BaskoFont 03: NimbusMono BS & Courier BS (p b o bo)

ABC abc + Ñ Ē Ř ű ē ř ABC abc + Ñ Ē Ř ű ē ř
ABC abc + Ñ Ē Ř ű ē ř ABC abc + Ñ Ē Ř ű ē ř

BaskoFont 04: Sans Narrow BS (p b o bo)


ABC abc + Ñ Ē Ř ű ē ř ABC abc + Ñ Ē Ř ű ē ř
ABC abc + Ñ Ē Ř ű ē ř ABC abc + Ñ Ē Ř ű ē ř

BaskoFont 05: Paltus BS (p b i bi)

ABC abc + Ñ Ē Ř ű ē ř ABC abc + Ñ Ē Ř ű ē ř
ABC abc + Ñ Ē Ř ű ē ř ABC abc + Ñ Ē Ř ű ē ř

BaskoFont 06: Schoolbook BS (p b i bi)

ABC abc + Ñ Ē Ř ű ē ř ABC abc + Ñ Ē Ř ű ē ř
ABC abc + Ñ Ē Ř ű ē ř ABC abc + Ñ Ē Ř ű ē ř

-  Standard character set with additional support for **Basque**
- Integrated support for Basque within one package
- PostScript Type 1 and TrueType included
- Polished screen-fonts for all weights (including 7, 8, and 9 points for Roman and Sans)
- No special keyboard driver required

BaskoFont 07: NimbusRoman BS SC (p, small caps)

ABC ABC + Ñ Ē Ŗ ñ ē í 0123456789?!

BaskoFont 08: CampusSans Light/Black BS (l lo bl blo)

ABC abc + Ñ Ē Ŗ ñ ē í **ABC abc + Ñ Ē Ŗ ñ ē í**
ABC abc + Ñ Ē Ŗ ñ ē í **ABC abc + Ñ Ē Ŗ ñ ē í**



- Standardzeichensatz mit **baskischen** Zusatzzeichen
- Baskisch-Unterstützung in einem einzigen Zeichensatz
- PostScript Type 1- and TrueType-Version enthalten
- Saubere Bildschirmschrift für alle Schnitte (Roman und Sans mit 7-Punkt, 8-Punkt, 9-Punkt!)
- Kein spezieller Tastatortreiber erforderlich

DelFont 1/2: Tiryns


ΑΒΓΔΕΖΗΘΙΚΑΜΝΞΟΠΣΤΥΦΧΨΩ ΑΕΙΟΥΨΗΩ ΪΥ
ΑΒΓΔΕΖΗΘΙΚΑΜΝΞΟΠΣΤΥΦΧΨΩ ΑΕΙΟΥΨΗΩ ΪΥ
ΑΒΓΔΕΖΗΘΙΚΑΜΝΞΟΠΣΤΥΦΧΨΩ ΑΕΙΟΥΨΗΩ ΪΥ
ΑΒΓΔΕΖΗΘΙΚΑΜΝΞΟΠΣΤΥΦΧΨΩ ΑΕΙΟΥΨΗΩ ΪΥ
 αβγδεζηθικλμνξοπρσςτυφχψω άείούήώ ιϋ ιϋ̂
αβγδεζηθικλμνξοπρσςτυφχψω άείούήώ ιϋ ιϋ̂
αβγδεζηθικλμνξοπρσςτυφχψω άείούήώ ιϋ ιϋ̂
αβγδεζηθικλμνξοπρσςτυφχψω άείούήώ ιϋ ιϋ̂


DelFont 1/2: Olympica

ΑΒΓΔΕΖΗΘΙΚΑΜΝΞΟΠΣΤΥΦΧΨΩ ΑΕΙΟΥΨΗΩ ΪΥ
ΑΒΓΔΕΖΗΘΙΚΑΜΝΞΟΠΣΤΥΦΧΨΩ ΑΕΙΟΥΨΗΩ ΪΥ
ΑΒΓΔΕΖΗΘΙΚΑΜΝΞΟΠΣΤΥΦΧΨΩ ΑΕΙΟΥΨΗΩ ΪΥ
ΑΒΓΔΕΖΗΘΙΚΑΜΝΞΟΠΣΤΥΦΧΨΩ ΑΕΙΟΥΨΗΩ ΪΥ
 αβγδεζηθικλμνξοπρσςτυφχψω άείούήώ ιϋ ιϋ̂
αβγδεζηθικλμνξοπρσςτυφχψω άείούήώ ιϋ ιϋ̂
αβγδεζηθικλμνξοπρσςτυφχψω άείούήώ ιϋ ιϋ̂
αβγδεζηθικλμνξοπρσςτυφχψω άείούήώ ιϋ ιϋ̂

DelFont 01: Tiryns & Olympica • TrueType only

DelFont 02: Tiryns & Olympica • PS & TT

-  • Standard Macintosh encoding for **Modern Greek**
- Compatible with Greek Mac OS
- PostScript Type 1 and TrueType included
- Polished screen-fonts for all weights
- Greek keyboard driver included

-  • Macintosh-Standard-Codierung für das **Neugriechische**
- Kompatibel mit dem griechischen Mac OS
- PostScript Type 1 und TrueType enthalten
- Saubere Bildschirmschrift für alle Schnitte
- Griechischer Tastatortreiber wird mitgeliefert

DelFont 05: GrCourier (p b o bo)

ΑΒΓΔΕΖΗΘΙΚΑΜΝΞΟΠΣΤΥΦΧΨΩ ἈΕΪΌΥΗΩ ĩÿ
ΑΒΓΔΕΖΗΘΙΚΑΜΝΞΟΠΣΤΥΦΧΨΩ ἈΕΪΌΥΗΩ ĩÿ
αβγδεζηθικλμνξοπρστυφχψω άείιούήώ ĩü ĩÿ
αβγδεζηθικλμνξοπρστυφχψω άείιούήώ ĩü ĩÿ

DelFont 06: Nimbus Roman Greek (p b i bi)

ΑΒΓΔΕΖΗΘΙΚΑΜΝΞΟΠΣΤΥΦΧΨΩ ἈΕΪΌΥΗΩ ĩÿ
ΑΒΓΔΕΖΗΘΙΚΑΜΝΞΟΠΣΤΥΦΧΨΩ ἈΕΪΌΥΗΩ ĩÿ
ΑΒΓΔΕΖΗΘΙΚΑΜΝΞΟΠΣΤΥΦΧΨΩ ἈΕΪΌΥΗΩ ĩÿ
ΑΒΓΔΕΖΗΘΙΚΑΜΝΞΟΠΣΤΥΦΧΨΩ ἈΕΪΌΥΗΩ ĩÿ
αβγδεζηθικλμνξοπρστυφχψω άείιούήώ ĩü ĩÿ
αβγδεζηθικλμνξοπρστυφχψω άείιούήώ ĩü ĩÿ
αβγδεζηθικλμνξοπρστυφχψω άείιούήώ ĩü ĩÿ
αβγδεζηθικλμνξοπρστυφχψω άείιούήώ ĩü ĩÿ

DelFont 07: Letter Gothic Greek (p b o bo)

ΑΒΓΔΕΖΗΘΙΚΑΜΝΞΟΠΣΤΥΦΧΨΩ ἈΕΪΌΥΗΩ ĩÿ
ΑΒΓΔΕΖΗΘΙΚΑΜΝΞΟΠΣΤΥΦΧΨΩ ἈΕΪΌΥΗΩ ĩÿ
αβγδεζηθικλμνξοπρστυφχψω άείιούήώ ĩü ĩÿ
αβγδεζηθικλμνξοπρστυφχψω άείιούήώ ĩü ĩÿ

DelFont 08: Olympica Light / Black • coming soon

OrientFont 01: Sumertime

- Komplette **wissenschaftliche Transliteration** für die Sprachen des **Vorderen Orients** (Sumerisch, Akkadisch, Hethitisch, Hurritisch, Elamisch, Ägyptisch, Ugaritisch, Hebräisch, Aramäisch, Syrisch, Altsüdarabisch, Klassisches Arabisch, Neuhocharabisch, Altäthiopisch)
- Complete **scientific transliteration** of **Near East languages** Sumer, Accadian, Hethitic, Hebrew, Arabic, Hurritic, Elamitic and many more!

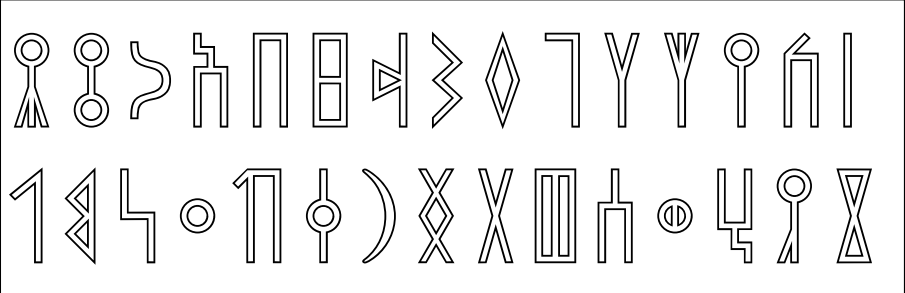
a á à â ã ä å ã Á Ā Ä Å À
 b b B
 c ċ ċ Č Č
 d ḏ ḏ ḏ Ḑ Ḑ
 e é è ê ē ē ē É È Ē
 g ğ ğ ğ Ğ Ğ Ğ Ğ
 h ḥ ḥ ḥ Ḥ Ḥ Ḥ
 i î ï ï ï Ì Í Î Ï
 k k K
 o ó ò ô õ ö Ö Ø
 p p p P P
 s š š š š Š Š Š Š
 t ṭ ṭ ṭ Ṭ Ṭ
 u ú ù û ü ū ū Ū Ū Ū Ū Ū
 z ž z Ž Z

OrientFont 02: Dareios (Old Persian Cuneiform)



Altpersische Keilschrift der Achämeniden (Dareios, Kyros). • Old Persian cuneiform of the Achaemenid empire (Dareios, Kyros)

OrientFont 10: Marib (Sabean, Old South Arabic)



IndoFont 05: Paltus SouthAsia (p b i bi)

ABC + Ā Ī Ō Ū Ṛ Ṭ Ḍ Ḣ Ṃ Ṣ Ḥ Ṁ Ṇ Ś Ź Ć Š Ź Ṣ Ṭ Kh G Z ...
 abc + ā á à ã ã ĩ ĩ ĩ ĩ ū ú û ù ſ ṛ ṛ ṛ ṛ ē ē ñ ṁ ò õ ṭ ḍ ḷ ṡ ṣ ḥ ṡ ḥ ṡ ḥ ...

ABC + Ā Ī Ō Ū Ṛ Ṭ Ḍ Ḣ Ṃ Ṣ Ḥ Ṁ Ṇ Ś Ź Ć Š Ź Ṣ Ṭ Kh G Z ...
 abc + ā á à ã ã ĩ ĩ ĩ ĩ ū ú û ù ſ ṛ ṛ ṛ ṛ ē ē ñ ṁ ò õ ṭ ḍ ḷ ṡ ṣ ḥ ṡ ḥ ṡ ḥ ...

ABC + Ā Ī Ō Ū Ṛ Ṭ Ḍ Ḣ Ṃ Ṣ Ḥ Ṁ Ṇ Ś Ź Ć Š Ź Ṣ Ṭ Kh G Z ...
 abc + ā á à ã ã ĩ ĩ ĩ ĩ ū ú û ù ſ ṛ ṛ ṛ ṛ ē ē ñ ṁ ò õ ṭ ḍ ḷ ṡ ṣ ḥ ṡ ḥ ṡ ḥ ...

ABC + Ā Ī Ō Ū Ṛ Ṭ Ḍ Ḣ Ṃ Ṣ Ḥ Ṁ Ṇ Ś Ź Ć Š Ź Ṣ Ṭ Kh G Z ...
 abc + ā á à ã ã ĩ ĩ ĩ ĩ ū ú û ù ſ ṛ ṛ ṛ ṛ ē ē ñ ṁ ò õ ṭ ḍ ḷ ṡ ṣ ḥ ṡ ḥ ṡ ḥ ...

Special order items

- IndoFont 2: Stempel Garamond SouthAsia (p b i bi)
- IndoFont 3: New Baskerville SouthAsia (p b i bi)
- IndoFont 6: TimesTen South Asia (p b i bi)
- IndoFont 7: Sabon SouthAsia (p b i bi)

Under development

Indolranian Fonts: Indolranian Roman, Sans

Transliteration for Avesta, Vedic, Sanskrit, Pali, Pakrit etc.



- Fonts und Tastaturreiber entwickelt von **Rainer Kimmig**
- **Transliteration** für die folgenden Sprachen: **Sanskrit** (incl. **Ve-disch**), **Pali**, **Prakrit**, **Bengali**, **Gujarati**, **Hindi**, **Marathi**, **Oriya**, **Panjabi**, **Tibetisch**, **Urdu** u.a.
- Alle Sonderzeichen fest vorgegeben und typogr. optimiert
- Bequeme Eingabe über mitgelieferten Tastaturreiber
- PostScript Type 1 und TrueType; saubere Bildschirmschrift
- Kompletter Rigveda-Text für registrierte Benutzer erhältlich

SinoFont 01: EastAsia Roman (p b i bi)

ABC abc + Đđ Ăă Ẻẻ Ẻẻ Ỡ Ỡ Ỡ Ỡ Ỡ Ỡ Ỡ Ỡ Ỡ Ỡ Ỡ Ỡ
 ABC abc + Đđ Ăă Ẻẻ Ẻẻ Ỡ Ỡ Ỡ Ỡ Ỡ Ỡ Ỡ Ỡ Ỡ Ỡ Ỡ Ỡ
ABC abc + Đđ Ăă Ẻẻ Ẻẻ Ỡ Ỡ Ỡ Ỡ Ỡ Ỡ Ỡ Ỡ Ỡ Ỡ Ỡ Ỡ
ABC abc + Đđ Ăă Ẻẻ Ẻẻ Ỡ Ỡ Ỡ Ỡ Ỡ Ỡ Ỡ Ỡ Ỡ Ỡ Ỡ Ỡ

SinoFont 04: EastAsia Sans (p b o bo)

ABC abc + Đđ Ăă Ẻẻ Ẻẻ Ỡ Ỡ Ỡ Ỡ Ỡ Ỡ Ỡ Ỡ Ỡ Ỡ Ỡ Ỡ
 ABC abc + Đđ Ăă Ẻẻ Ẻẻ Ỡ Ỡ Ỡ Ỡ Ỡ Ỡ Ỡ Ỡ Ỡ Ỡ Ỡ Ỡ
ABC abc + Đđ Ăă Ẻẻ Ẻẻ Ỡ Ỡ Ỡ Ỡ Ỡ Ỡ Ỡ Ỡ Ỡ Ỡ Ỡ Ỡ
ABC abc + Đđ Ăă Ẻẻ Ẻẻ Ỡ Ỡ Ỡ Ỡ Ỡ Ỡ Ỡ Ỡ Ỡ Ỡ Ỡ Ỡ

SinoFont 05: EastAsia Roman SC (small caps, p)

ABC ABC + ĐĐ ĂĂ ẺẺ ỠỠ ỠỠ ỠỠ ỠỠ ỠỠ ỠỠ ỠỠ ỠỠ ỠỠ ỠỠ ỠỠ ỠỠ

Vietnamese Tones

ả ấ ầ ấ ạ ậ ầ ẩ ẩ ẩ
 ả ấ ầ ấ ạ ậ ầ ẩ ẩ ẩ
ả ấ ầ ấ ạ ậ ầ ẩ ẩ ẩ
ả ấ ầ ấ ạ ậ ầ ẩ ẩ ẩ

Vietnamese Tones

ả ấ ầ ấ ạ ậ ầ ẩ ẩ ẩ
 ả ấ ầ ấ ạ ậ ầ ẩ ẩ ẩ
ả ấ ầ ấ ạ ậ ầ ẩ ẩ ẩ
ả ấ ầ ấ ạ ậ ầ ẩ ẩ ẩ

- Vietnamese, Malay, Javanese, Madura, Sunda, Minankabaw, Uolio, Fiji, Samoan
- All Vietnamese accents & tone marks included
- Hand-edited bitmaps from 9 to 14 pts.
- PostScript and TrueType included
- No special keyboard driver required



SinoFont 02: Pinyin Roman (p b i bi)

ABC + Ā Ē Ī Ō Ū Ū́ Á É Í Ó Ú Ú́ Ā Ě Ĭ Ŏ Ũ Ṹ À È Ì Ò Ù Ù́,
 ABC + Ā Ē Ī Ō Ū Ū́ Á É Í Ó Ú Ú́ Ā Ě Ĭ Ŏ Ũ Ṹ À È Ì Ò Ù Ù́,
 ABC + Ā Ē Ī Ō Ū Ū́ Á É Í Ó Ú Ú́ Ā Ě Ĭ Ŏ Ũ Ṹ À È Ì Ò Ù Ù́,
 ABC + Ā Ē Ī Ō Ū Ū́ Á É Í Ó Ú Ú́ Ā Ě Ĭ Ŏ Ũ Ṹ À È Ì Ò Ù Ù́,
 abc + ā ē ī ō ū ū́ á é í ó ú ú́ ǎ ě ĭ ǒ ŭ ŭ́ à è ì ò ù ù́,
 abc + ā ē ī ō ū ū́ á é í ó ú ú́ ǎ ě ĭ ǒ ŭ ŭ́ à è ì ò ù ù́,
 abc + ā ē ī ō ū ū́ á é í ó ú ú́ ǎ ě ĭ ǒ ŭ ŭ́ à è ì ò ù ù́,
 abc + ā ē ī ō ū ū́ á é í ó ú ú́ ǎ ě ĭ ǒ ŭ ŭ́ à è ì ò ù ù́,

SinoFont 03: Pinyin Sans (p b o bo)

ABC + Ā Ē Ī Ō Ū Ū́ Á É Í Ó Ú Ú́ Ā Ě Ĭ Ŏ Ũ Ṹ À È Ì Ò Ù Ù́,
 ABC + Ā Ē Ī Ō Ū Ū́ Á É Í Ó Ú Ú́ Ā Ě Ĭ Ŏ Ũ Ṹ À È Ì Ò Ù Ù́,
 ABC + Ā Ē Ī Ō Ū Ū́ Á É Í Ó Ú Ú́ Ā Ě Ĭ Ŏ Ũ Ṹ À È Ì Ò Ù Ù́,
 ABC + Ā Ē Ī Ō Ū Ū́ Á É Í Ó Ú Ú́ Ā Ě Ĭ Ŏ Ũ Ṹ À È Ì Ò Ù Ù́,
 abc + ā ē ī ō ū ū́ á é í ó ú ú́ ǎ ě ĭ ǒ ŭ ŭ́ à è ì ò ù ù́,
 abc + ā ē ī ō ū ū́ á é í ó ú ú́ ǎ ě ĭ ǒ ŭ ŭ́ à è ì ò ù ù́,
 abc + ā ē ī ō ū ū́ á é í ó ú ú́ ǎ ě ĭ ǒ ŭ ŭ́ à è ì ò ù ù́,
 abc + ā ē ī ō ū ū́ á é í ó ú ú́ ǎ ě ĭ ǒ ŭ ŭ́ à è ì ò ù ù́,

SinoFont 06: Pinyin Roman SC (small caps, p)

ABC + Ā Ē Ī Ō Ū Ū́ Á É Í Ó Ú Ú́ Ā Ě Ĭ Ŏ Ũ Ṹ À È Ì Ò Ù Ù́
 ABC + Ā Ē Ī Ō Ū Ū́ Á É Í Ó Ú Ú́ Ā Ě Ĭ Ŏ Ũ Ṹ À È Ì Ò Ù Ù́

- **Transliteration for Chinese (Pinyin)**
- All tone marks included
- Hand-edited bitmaps for all weights
- PostScript and TrueType included
- Easy-to-use keyboard drivers included: 1, 2, 3, 4
 plus vowel produces accented vowel

MosFont 3b: TAccents & HAccents

čšžěň čśžńý àèy ʋęq ũ éz ěyōāō äęğyöü āēūy ŷ ș óú äö ãðüè + đ ł ą
 ČŠŽŇĚ ČŚŇÝŽ Ů Ğ ÓŮ ĚŽ ŚŢ + Đ Ł AĘ Ī

čšžěň čśžńý àèy ʋęq ũ éz ěyō äęğyöü āēūy ŷ ș óú äö ãðüè + đ ł ą
 ČŠŽŇĚ ČŚŇÝŽ Ů Ğ ÓŮ ĚŽ ŚŢ + Đ Ł AĘ Ī

čšžěň čśžńý àèy ʋęq ũ éz ěyōāō äęğyöü āēūy ŷ ș óú äö ãðüè + đ ł ą
 ČŠŽŇĚ ČŚŇÝŽ Ů Ğ ÓŮ ĚŽ ŚŢ + Đ Ł AĘ Ī

čšžěň čśžńý àèy ʋęq ũ éz ěyō äęğyöü āēūy ŷ ș óú äö ãðüè + đ ł ą
 ČŠŽŇĚ ČŚŇÝŽ Ů Ğ ÓŮ ĚŽ ŚŢ + Đ Ł AĘ Ī

čšžěň čśžńý àèy ʋęq ũ éz ěyōāō äęğyöü āēūy ŷ ș óú äö ãðüè + đ ł ą
 ČŠŽŇĚ ČŚŇÝŽ Ů Ğ ÓŮ ĚŽ ŚŢ + Đ Ł AĘ Ī

čšžěň čśžńý àèy ʋęq ũ éz ěyō äęğyöü āēūy ŷ ș óú äö ãðüè + đ ł ą
 ČŠŽŇĚ ČŚŇÝŽ Ů Ğ ÓŮ ĚŽ ŚŢ + Đ Ł AĘ Ī

not pictured • ohne Abbildung:

MosFont 22: PAccents (b p i bi)

MosFont 02: NYAccents, GenAccents, MonAcc.

MosFont 36: HAccents Light/Black

MosFont 3a: TPlusChars, HPlusChars

- **Universal transliteration** fonts for many languages
- Flying accents for lowercase and uppercase characters
- Accents can be combined with any base character
- Polished screen fonts for all weights (9 pt. to 24 pt.)

MosFont 41: Roman OverUnder

abcdefghijklmnopqrstuvwxyz abcdefghijklmnopqrstuvwxyz
 abcdefghijklmnopqrstuvwxyz aḇcḍefghijklmṇopqrṣṭvṽwxyz
 abcdefghijklmnopqrstuvwxyz aḇcḍefghijklmṇopqrṣṭvṽwxyz
 + ę p f ę p f ę p f

- **Overbar and Underdot for lowercase characters**
- For philologists, linguists, historians, etc.
- PostScript Type 1, and TrueType
- Polished bitmaps for all weights

SpecFont 01: Breiskopf Fraktur (by Sascha Selke)

ABCDEFGHIJKLMNOPQRSTUVWXYZ
 abcdefghijklmnopqrstuvwxyz äüß?!

SpecFont 02: Lesebuch • Schulschrift

ABCDEFGHIJKLMNOPQRSTUVWXYZ ÄÖÜ
 abcdefghijklmnopqrstuvwxyz äöüß 01234567
 ABCDEFGHIJKLMNOPQRSTUVWXYZ ÄÖÜ
 abcdefghijklmnopqrstuvwxyz äöüß 01234567

SpecFont 03: HEsperanto • Esperanto

ABCabc + ĈĉĜĝŜŝĴĵĤĥŬŭ ABCabc + ĈĉĜĝŜŝĴĵĤĥŬŭ
 ABCabc + ĈĉĜĝŜŝĴĵĤĥŬŭ ABCabc + ĈĉĜĝŜŝĴĵĤĥŬŭ

SpecFont 05: Ougenweide • Frühneuhochdeutsch

ABCabc + ĀĒĪŌŪ āēīōū f ę ũ ů ŭ ű Ű p Þ Ð ð
 ABCabc + ĀĒĪŌŪ āēīōū f ę ũ ů ŭ ű Ű p Þ Ð ð
 ABCabc + ĀĒĪŌŪ āēīōū f ę ũ ů ŭ ű Ű p Þ Ð ð
 ABCabc + ĀĒĪŌŪ āēīōū f ę ũ ů ŭ ű Ű p Þ Ð ð

SpecFont 06: Thule Roman • Old Icelandic

ABC abc + Ý ý Ð ð Þ þ Q q E e Ó ó Ē é Ą á V v Ó ó Ö ö a á
 ABC abc + Ý ý Ð ð Þ þ Q q E e Ó ó Ē é Ą á V v Ó ó Ö ö a á
 ABC abc + Ý ý Ð ð Þ þ Q q E e Ó ó Ē é Ą á V v Ó ó Ö ö a á
 ABC abc + Ý ý Ð ð Þ þ Q q E e Ó ó Ē é Ą á V v Ó ó Ö ö a á

SpecFont 07: Thule Sans • Old Icelandic

ABC abc + Ð ð Þ þ Q q E e Ó ó Ē é Ą á Ý ý V v Ó ó Ö ö a á
 ABC abc + Ð ð Þ þ Q q E e Ó ó Ē é Ą á Ý ý V v Ó ó Ö ö a á
 ABC abc + Ð ð Þ þ Q q E e Ó ó Ē é Ą á Ý ý V v Ó ó Ö ö a á
 ABC abc + Ð ð Þ þ Q q E e Ó ó Ē é Ą á Ý ý V v Ó ó Ö ö a á



CrossFont 01: Roman Greek

CrossFont 02: Greek Sans

These two packages contain Modern Greek fonts made especially for easy data exchange between Macs and PCs. Each package contains a Mac version and a Windows version of the same font. Font formats are Type 1 and TrueType. No special keyboard driver is required.

CrossFont 03: KOI-8 Cyrillic (Internet!)

KOI-8 is the most popular encoding for Cyrillic on the Internet. To read Cyrillic Internet pages, you need Cyrillic KOI-8 fonts for your browser. This is the professional package that contains everything you need to read and edit KOI-8 text:

One proportional font, **Roman KOI8Cyr**, and a monospaced font, **Courier KOI8Cyr**, as well as two keyboard drivers, "Phonetic > KOI8" and "Russian > KOI8". Both fonts have polished bitmaps for perfect on-screen display. Font formats are Type 1 and TrueType.

CrossFont 04: Roman WinCyr (CP 1251)

CrossFont 05: Ladoga WinCyr (CP 1251)

These two packages make the Windows standard encoding for Cyrillic (also known as CodePage 1251) available on the Macintosh. The fonts serve two purposes:

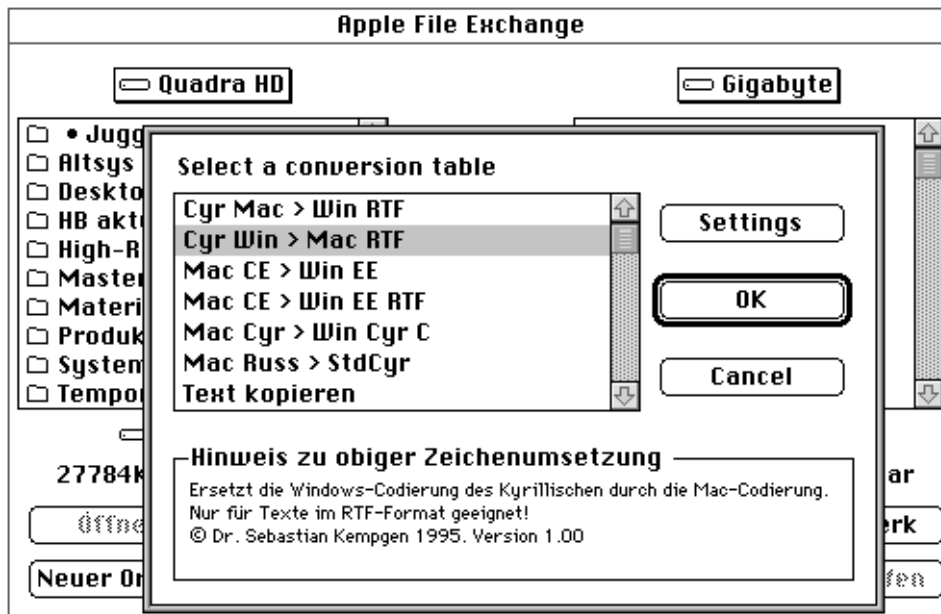
- a) easy* data exchange with Windows users,
- b) browsing Cyrillic web pages that use the Windows encoding.

Besides the font, each package contains two keyboard drivers: "Phonetic > WinCyr" and "Russian > WinCyr". Polished bitmaps guarantee perfect on-screen reading. Font formats are Type 1 and TrueType.

* this also depends on the program you are using!

More CrossFonts available or under development.

Text Converter Windows ↔ Mac for Cyrillic & Latin Eastern Europe (CE)



- Konverter für das kyrillische Alphabet und die lateinischen Alphabete Ostmitteleuropas für die Datenübertragung zwischen Mac und PC.
- Modul für "Dateien konvertieren" (Mac-Systemsoftware 7.1).
- Für reinen ASCII-Text oder RTF-Dateien.
- Converter module for use with "Apple File Exchange" (part of System software 7.1).
- Convert text files (plain ASCII, no formatting) as well as RTF files (which keep all formatting intact).
- Several converters for Cyrillic and Latin alphabets from Eastern Europe included.



CoreFont 01: Nimbus Roman

Roman **Bold** *Italic* **BoldItalic**

CoreFont 02: Nimbus Sans

Regular **Bold** *Oblique* **BoldOblique**

CoreFont 03: Courier Two, Nimbus Mono

Light, **Bold** & Regular, **Bold**

CoreFont 04: Nimbus Sans Narrow

Regular **Bold** *Oblique* **BoldOblique**

CoreFont 05: Paltus

Roman **Bold** *Italic* **BoldItalic**

CoreFont 06: Schoolbook

Roman **Bold** *Italic* **BoldItalic**

CoreFont 07: Nimbus Roman SC

ROMAN SMALL CAPS 0123456789

CoreFont 08: Campus Sans Light/Black

Light **Black** *LightOblique* **BlackOblique**

CoreFont 09: Campus Ten & Twelve

“Chicago” in square pixels outline format!

CoreFont 10: Magister (book)

ABCDEFGHIJKLMN nopqrstuvwxyz äöüß

Designed by Evgenij Dobrovinskij/DEsign

- **Macintosh standard fonts for West European languages**
- Type 1, Type 1 for QuickDraw GX, and TrueType
- PostScript and TrueType versions with identical widths and screen-fonts
- Four weights per package (unless otherwise indicated)
- Polished bitmaps for 7, 8, and 9 points! (Nimbus Roman and Nimbus Sans)
- “Albanian” keyboard driver included – not available elsewhere!

**NEW FONTS BY EVGENIJ DOBROVINSKIJ,
DESIGN/MOSCOW 1997**

1 • Magister (Latin and Cyrillic)

ABCDEFGHIJKLMNORPQR
STUVWXYZ 01234567890?!
abcdefghijklmnopqrstuvwxy
АБВГДЕЖЗИЙКЛМНОП
СТУФХЦЧШЩЪЫЬЭЮЯ
абвгдежзийклмнопрстуфхц
чшщъыьэюя • 0123456789?!

2 • Inessa Cyrillic (Calligraphic Handwriting)

*АБВГДЕЁЖЗИЙКЛМНОПР
СТУФХЦЧШЩЪЫЬЭЮЯ
абвгдеёжзийклмнопрстуфхцчшщъыьэюя*